



# Entech Mechanical Services Ltd

**Experts in Pipework Installation, Fabrication & Mechanical Services.**

At Entech, we provide complete pipework and mechanical installation solutions for industrial and commercial clients across the UK.

Our reputation has been built on precision, reliability, and technical expertise. Delivering complex mechanical projects safely, efficiently, and to the highest standards.

From initial design through to on-site installation and final commissioning, our experienced team ensures every element of your project runs seamlessly.

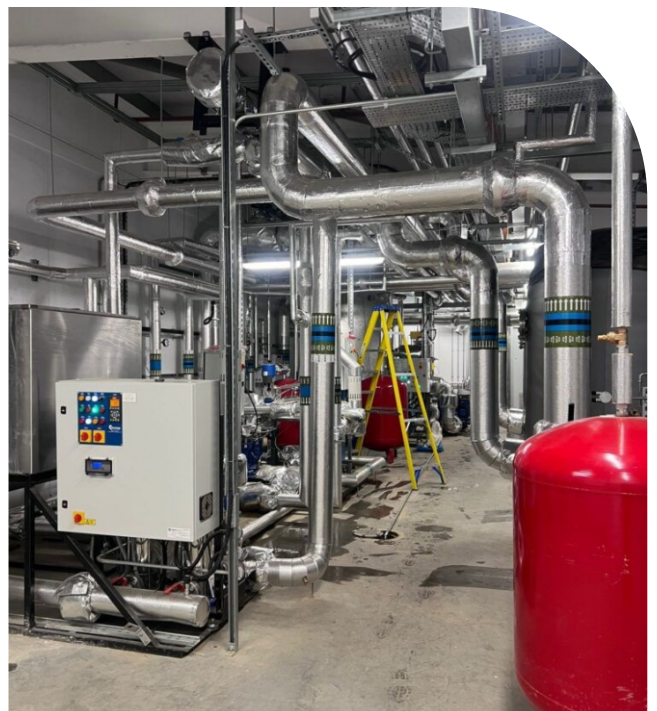
We combine years of industry experience with a hands-on, solution-driven approach that keeps projects on schedule and within specification.

## Who We Are

Owner and managing director, Charles Balaam, has built a team of experienced engineers and fabricators that has grown into a trusted name in industrial pipework and mechanical installations.

We've built long-term relationships with leading companies in sectors such as manufacturing, food & beverage, energy, water treatment, and process industries.

Our success is driven by one thing, commitment. Every project, large or small, receives the same attention to detail, planning, and execution. We believe in doing things properly the first time, maintaining clear communication throughout, and delivering work we're proud to put our name to.



# Industrial Pipework Solutions

Pipework is at the heart of everything we do. Entech specialises in the design, fabrication, and installation of high-quality pipework systems across multiple sectors.

Whether it's stainless steel, mild steel, carbon steel, or plastic systems, we have the in-house capability to deliver a complete turnkey solution. From isometric drawings through to pressure testing and certification.

Our installation teams are fully qualified, safety-trained, and accustomed to working within live environments. Every joint, weld, and connection is carried out with precision and compliance to industry standards.

Our pipework services include:

- Process and utility pipework
- Steam and condensate systems
- Water, air, and gas installations
- Hygienic and stainless pipework
- Prefabricated skid assemblies
- Testing and commissioning



## Precision Fabrication, Built to Last

Our in-house fabrication facility allows us to control quality and lead times while producing custom-built solutions for each project.

We fabricate a wide range of components, from pipe spools and brackets to full steel frameworks, skids, and structural assemblies.

Every product is built to exact specification and finished to withstand demanding industrial conditions.

Capabilities include:

- MIG, TIG, and MMA welding.
- Stainless and mild steel fabrication.
- Structural steel assemblies.
- Modular and skid-based systems.
- Prefabrication and on-site installation.



## Complete Mechanical Project Delivery

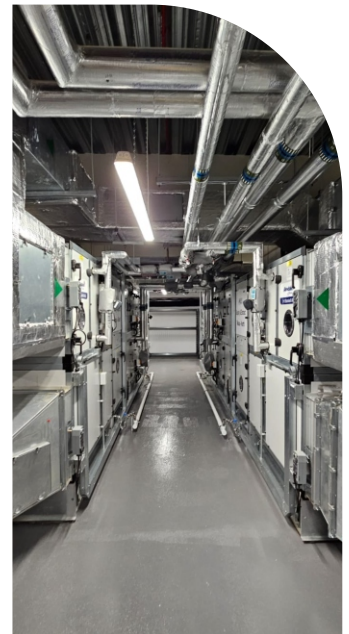
Entech delivers full mechanical installation packages, handling everything from plant relocation to system upgrades and new builds.

We take ownership of the full process. Coordinating pipework, equipment, and steelwork to ensure an integrated and efficient installation.

Our engineers work closely with clients and contractors to ensure each project is executed safely, efficiently, and in line with specification.

Mechanical capabilities include:

- Equipment installation and alignment.
  - Pump, valve, and vessel fitting.
- Plant relocation and decommissioning.
- Structural supports and access platforms.
  - Turnkey mechanical installations.



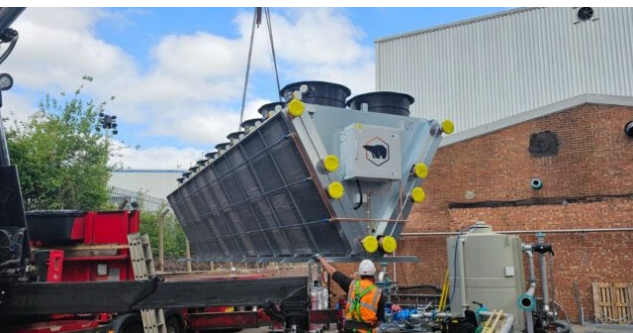
## Safety Comes First

Health and safety are central to how we operate. Every project is planned with risk assessment, method statements, and safety compliance as top priorities. Our engineers and site teams hold the relevant CSCS, CCNSG, and confined space certifications, ensuring work is carried out safely and professionally at all times.

We also maintain strong relationships with safety consultants and clients' site managers to continuously review and improve standards.

Our safety commitments:

- Full RAMS documentation for all works.
- Regular toolbox talks and site audits.
  - Adherence to CDM regulations.
- Ongoing staff training and certification.



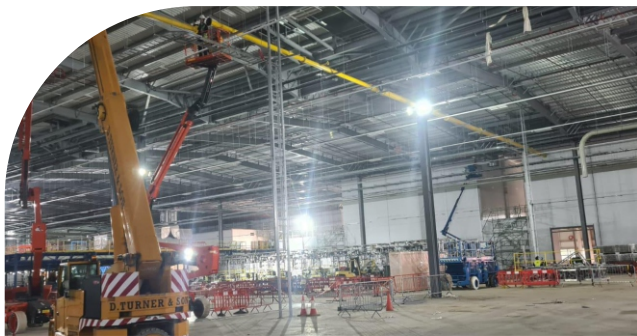
## Trusted Across Industry

Our flexibility and technical ability allow us to support clients across a wide range of sectors. Delivering projects from local factory upgrades to large-scale national installations.

We work across:

- Food & Beverage Manufacturing.
- Utilities & Water Treatment.
- Energy & Renewables.
- Petrochemical & Process Industries.
- Pharmaceutical & Chemical.

No matter the sector, our approach remains the same: precision engineering, safe delivery, and reliable results.



## Why Choose Entech

Clients choose us because we bring professionalism, control, and trust to every project. We understand the pressures of industrial environments. Downtime costs money, deadlines matter, and safety is non-negotiable.

Our clients stay with us because we don't just complete projects; we deliver confidence.

Why clients choose us:

- Proven industry expertise.
- Turnkey design-to-installation capability.
- Nationwide coverage.
- Strong safety culture.
- Fast response and flexible scheduling.
- Long-term maintenance and support.



**Entech Mechanical Services Ltd**

# **Delivering engineered pipework and mechanical installations across the UK.**

[www.pipework-installers.co.uk](http://www.pipework-installers.co.uk)

[charlesbalaam@entechukltd.co.uk](mailto:charlesbalaam@entechukltd.co.uk)

07976133525

**Based in the UK and operating nationwide**

